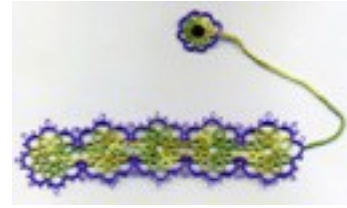




[Click here](#)



[Click here](#)

Materials required – size 20 thread, 1 bead measuring ¼” in diameter (if required).

Abbreviations

SCMR	Self closing mock ring	Ch	chain
Cl	close	RW	Reverse work
+	join	SR	Split ring
SS	Switch shuttles	vsp	Very small picot
-	picot	- -	Longer picot
SCh	Split chain	LBP	Long beaded picot

Note: for those who prefer front side/back side tatting the text in italics and red indicates where the worker needs to use the second half of the ds first.

Side 1

SCMR1: 5 vsp 3 SS
 R: 2 vsp 1 vsp 2 Cl SS
 SCMR1: 3 vsp 5 Cl RW SS

Ch: 3 - 3 -- 3 - 3 RW SS

* SCMR2: 5 + (vsp SCMR1) 3 SS
 R: 2 + (vsp R on SCMR1) 1 vsp 2 Cl SS
 SCMR2: 3 vsp 5 Cl RW SS

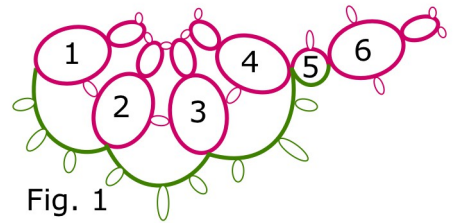


Fig. 1

Ch: 3 - 3 -- 3 - 3 RW SS

SCMR3: 5 + (vsp SCMR2) 3 SS
 R: 2 + (vsp R on SCMR2) 1 vsp
 2 Cl SS
 SCMR3: 3 vsp 5 Cl RW SS

Ch: 3 - 3 -- 3 - 3 RW SS

SCMR4: 5 + (vsp SCMR3) 3 SS
 R: 2 + (vsp R on SCMR3) 1 vsp
 2 Cl SS
 SCMR4: 3 vsp 5 Cl SS

SR5: 2 - 2 / 4 Cl SS

SCMR6: 5 vsp 3 SS
 R: 2 vsp 1 vsp 2 Cl SS
 SCMR6: 3 vsp 5 Cl SS RW

*Ch: 3 + (last p previous Ch) 3 -- 3 - 3 RW SS **

Repeat from * to * for length required (suggest 4 repeats in total) ending with SCMR 4 on last repeat.

First End

SR1: 2 - 2 / 4 Cl SS
 SCMR2: 5 vsp 3 SS
 R: 2 vsp 1 vsp 2 Cl SS
 SCMR2: 3 vsp 5 Cl RW SS

Ch: 3 + (last p previous Ch) 3 -- 3 - 3 RW SS

SCMR3: 5 + (vsp SCMR2) 3 SS
 R: 2 + (vsp R on SCMR2) 1 vsp 2 Cl SS
 SCMR3: 3 vsp 5 Cl RW SS

Ch: 3 - 3 -- 3 - 3 RW SS

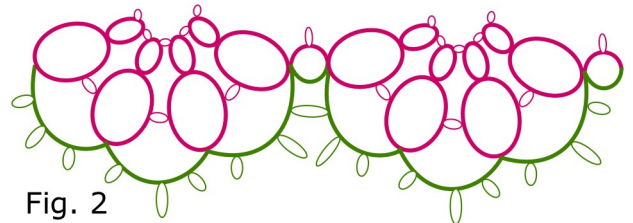


Fig. 2

SCMR4: 5 + (vsp SCMR3) 3 SS
 R: 2 + (vsp R on SCMR3) 1 vsp 2 CI SS
 SCMR4: 3 vsp 5 CI RW SS

Ch: 3 - 3 --- 3 - 3 RW SS

SCMR5: 5 + (vsp SCMR4) 3 SS
 R: 2 + (vsp R on SCMR4) 1 vsp 2 CI SS
 SCMR5: 3 vsp 5 CI RW SS

Ch: 3 - 3 --- 3 - 3 RW SS

SCMR6: 5 + (vsp SCMR5) 3 SS
 R: 2 + (vsp R on SCMR5) 1 vsp 2 CI SS
 SCMR6: 3 vsp 5 CI RW SS

Ch: 3 - 3 --- 3 - 3 RW SS

SCMR7: 5 + (vsp SCMR6) 3 SS
 R: 2 + (vsp R on SCMR6) 1 vsp 2 CI SS
 SCMR7: 3 vsp 5 CI RW SS

Ch: 3 - 3 --- 3 - 3 RW SS

SCMR8: 5 + (vsp SCMR7) 3 SS
 R: 2 + (vsp R on SCMR7) 1 vsp 2 CI SS
 SCMR8: 3 vsp 5 CI RW SS

Ch: 3 - 3 --- 3 - 3 RW SS

SCMR9: 5 + (vsp SCMR8) 3 SS
 R: 2 + (vsp R on SCMR8) 1 + (vsp R on SCMR2) 2 CI SS
 SCMR9: 3 + (vsp SCMR1) 5 CI SS

Side 2

SR1: 2 + (SR on side 1) 2 / 4 CI SS
 SCMR2: 5 + (vsp SCMR on side 1) 3 SS
 R: 2 + (vsp on R on SCMR1 on side 1) 1 vsp 2 CI SS
 SCMR2: 3 vsp 5 CI SS

Ch: 3 + (last p previous Ch) 3 --- 3 - 3 RW SS

SCMR3: 5 + (vsp SCMR2) 3 SS
 R: 2 + (vsp on R on SCMR2) 1 vsp 2 CI SS
 SCMR3: 3 vsp 5 CI SS

Ch: 3 - 3 --- 3 - 3 RW SS

SCMR4: 5 + (vsp SCMR3) 3 SS
 R: 2 + (vsp on R on SCMR3) 1 vsp 2 CI SS
 SCMR4: 3 vsp 5 CI SS

Ch: 3 - 3 --- 3 - 3 RW SS

SCMR5: 5 + (vsp SCMR4) 3 SS
 R: 2 + (vsp on R on SCMR4) 1 + (vsp on R on SCMR on side 1) 2 CI SS
 SCMR5: 3 + (vsp SCMR on side 1) 5 CI

Repeat from SR1 at start of side 2 three times and then RW.

There are two ways to finish and continue to the tail. Firstly by working a split chain as follows.

SCh: 3 - 3 SLT + (base SCMR1) / 3 - 3 RW SS then start tail with SR2

OR

Ch: 3 - 3 vsp 3 - 3 T & C to base of first SCMR

Tail

R1: 4 + (p on end Ch of body) 4 CI
 SR2: 7 vsp 1 / 7 vsp 1 CI SLT SS
 SR3: 1 + (vsp last SR) 6 vsp 1 / 1 + (vsp last SR) 6 vsp 1 CI SLT SS
 Repeat SR3 for roughly 4".

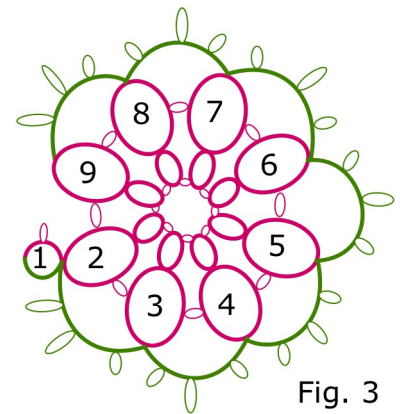


Fig. 3

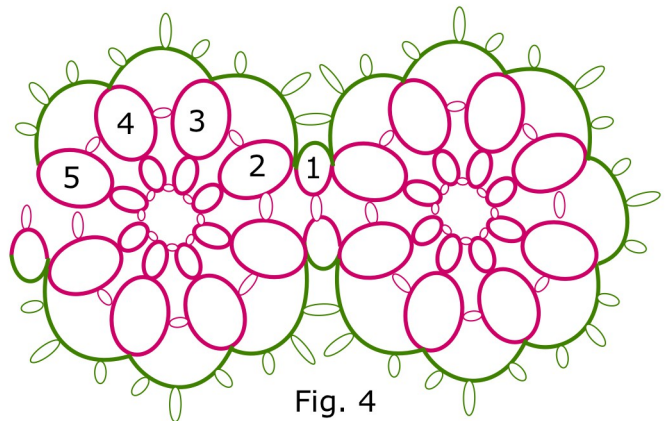


Fig. 4

Motif

R1: 4 vsp 1 LBP (large bead) 1 vsp 4 CI RW

Ch: 1 + (vsp last SR) 7 RW

R2: 4 + (vsp R1) 2 vsp 4 CI RW

Ch: 8 RW

R3: 4 + (vsp R2) 2 vsp 4 CI RW

Ch: 8 RW

R4: 4 + (vsp R3) 2 vsp 4 CI RW

Ch: 8 RW

R5: 4 + (vsp R4) 1 + (LBP) 1 vsp 4 CI RW

Ch: 8 RW

R6: 4 + (vsp R5) 2 vsp 4 CI RW

Ch: 8 RW

R7: 4 + (vsp R6) 2 vsp 4 CI RW

Ch: 8 RW

R8: 4 + (vsp R7) 2 + (vsp R1) 4 CI RW

Ch: 7 + (vsp first Ch) 1 T & C to base R1

In the second (green and purple) bookmark above I've used the half double double stitch to make the tail. This is faster to work and gives a slimmer finish.