

HOME Elephant Bookmark © Geraldine Starbuck 2010

This bookmark is approximately 6 ½ inches (16.5 cm) long and 2 ¾ inches (7 cm) wide.

Requirements:

2 size 4mm black beads, 2 black seed beads, grey thread, pink (for the ear of the mouse) and white (for the tusks). I used number 20 but any thickness will work.

Two shuttles are used throughout except for the mouse motif.

Keep referring to the picture/diagrams as you work.

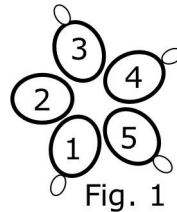
Mouse motif (1 shuttle)

R1: 7 - 7

R2: 14

R3 to R5: 7 - 7

Cut and tie.



Tusks - make two with white thread (2 shuttles)

SR1: 2 / vsp 2

SR2: 3 / 3

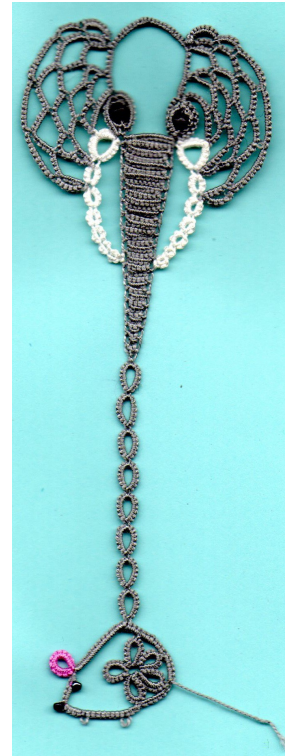
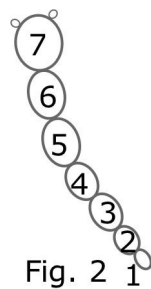
SR3: 4 / 4

SR4: 4 / 4

SR5: 5 / 5

SR6: 5 / 5

R7: 5, vsp, 5, vsp, 5, Cut and tie



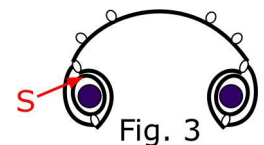
Elephant's Head - (first eye, head, second eye) (2 shuttles)

SH1, R1: 7 vsp 7 add bead by pulling down the core thread at the vsp, add the bead, pass the shuttle through the loop and close the ring carefully, RW

CH: vsp 9 Lj to vsp on ring, 9 Lj to vsp at start of chain, 4 - 6 - 20 - 6 - 4, DNRW, SS

SH2, R2: 7 vsp 7 add bead as in 'R.1', RW

CH: vsp 9 Lj to vsp on ring, 9 + to vsp at start of this chain, RW, SS



Ear 1 - make sure the tusk curves into the centre. All joins are to picots on previous chain.

*CH: 6 - 6 Lj to the tusk's right hand picot, RW, SLT

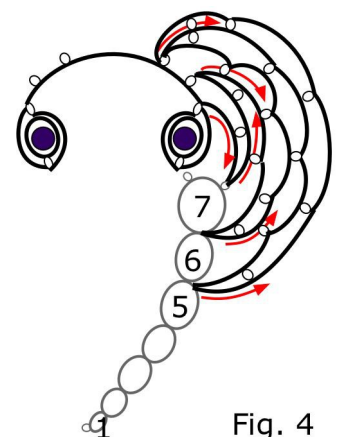
CH: 4 - 4 Lj 4 - 4 Lj to 1st picot on head, RW, SLT

CH: 3 - 3 Lj 4 - 4 Lj 3 - 3 - 3 Lj between SRs 7 and 6 of tusk, RW, SLT

CH: 4 Lj 3 - 3 Lj 4 - 4 Lj 4 - 4 Lj 3 - 3 Lj (p on head), RW, SLT

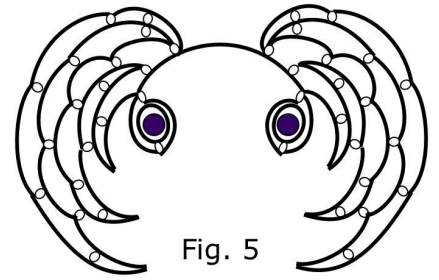
CH: 4 Lj - 3 - 3 Lj 4 - 5 Lj 5 - 5 Lj 5 - 5 Lj between SRs 6 and 5, RW, SLT

CH: 5 Lj 10 Lj 10 Lj 10 Lj 6 Lj 8. Cut and tie as in the picture**.



Ear 2 - make sure the tusk curves into the centre

Join to top outside edge of eye and work as for the first ear from * to **



Trunk - Grey is Sh1 with beads on

String one two seed bead on each shuttle and wind two shuttles CTM.

Turn the elephant head upside down.

At the end of each row DNRW but turn your work as in turning the page of a book and SLT.

Join to the free vsp on the tusk and the bottom of the eye on left side.

At the start of each row work a vsp and at the end of each row Lj to to the vsp of the previous row.

Row 1 CH: 9 + to other tusk and eye

Rows 2 to 4 CH: 9

Rows 5 to 8 CH: 8

Rows 9 to 12 CH: 7

Rows 13 to 16 CH: 6

Join to the tusks on rows 19 and 20

Rows 17 to 20 CH: 5

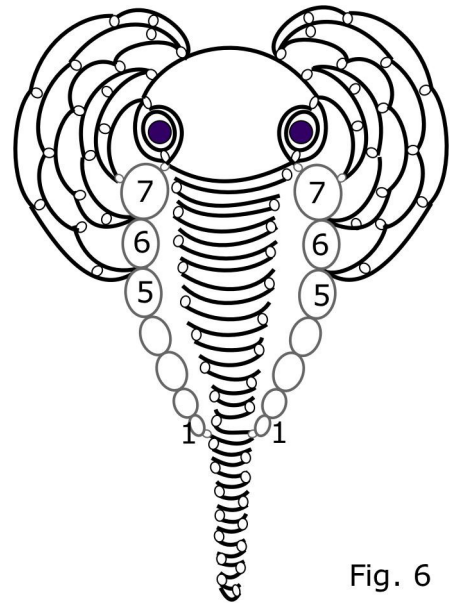
Rows 21 to 24 CH: 4

Rows 25 to 28 CH: 3

Rows 29 to 32 CH: 2

Rows 33 and 34 CH 1 omitting picot at start of row 34

Work 8 SRs 8 / 8 Do not cut



Mouse

Cut a length of pink thread long enough to finger tat the mouse's ear and a short length of grey thread for its tail. Tip: tie a knot at each end of these threads to stop them pulling through your work.

CH: 6 add in the pink thread and work over it for another 6 stitches.

Using the pink thread finger tat a ring of 12 ds.

Pick up the grey thread and continue with a chain working over the pink thread as before

CH: 3, move up the bead on the core thread, for the eye, (thread the pink thread through the bead too to hide it.

CH: 5, leave out the pink thread, bring up the bead on the second shuttle, for the nose

CH: 6 - 14 - 1, Lj to R1 mouse motif

Add in the short length of grey thread for the tail and work over it

CH: 6 Lj to next picot of mouse motif, leave out the grey thread

CH: 8 Lj to next picot on the mouse motif, 8 Lj to last picot on the mouse motif,

CH 4 + to the base of SR.8

Cut and tie.

Trim ear and tail threads leaving about an inch for the tail.

For any help with this pattern, [please email me.](#)

